

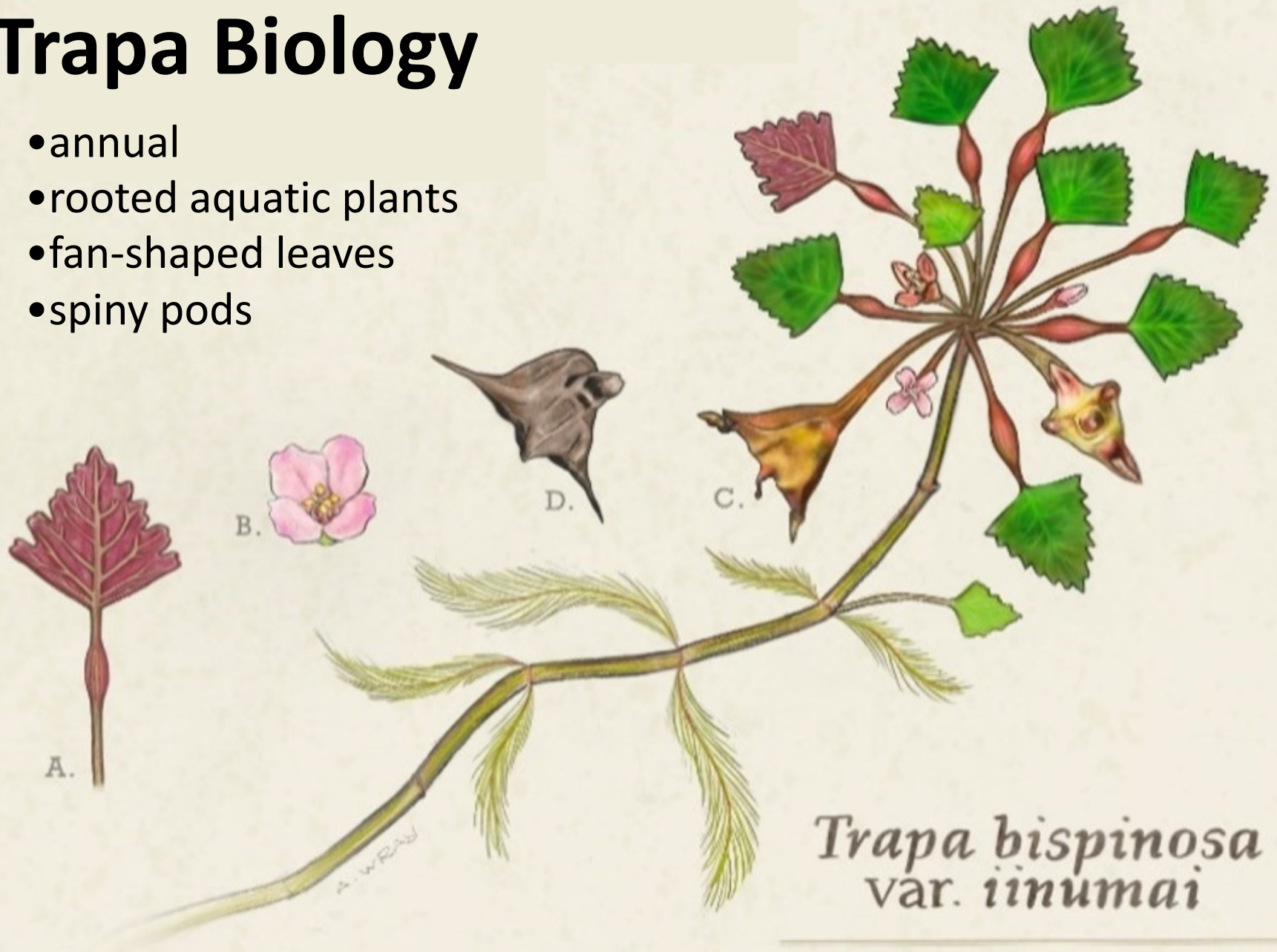
# It's Trapa Season!



Sara Tangren, Coordinator  
National Capital PRISM  
DC Dept. of Energy & Environment

# Trapa Biology

- annual
- rooted aquatic plants
- fan-shaped leaves
- spiny pods



*Trapa bispinosa*  
var. *iinumai*

illustration by Amanda K. Wray

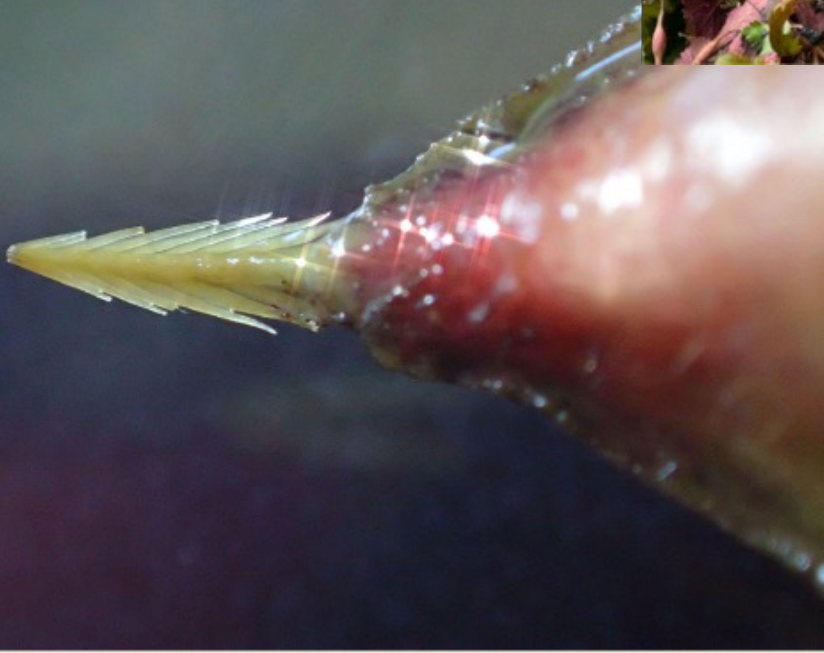
Two-horned water chestnut



# Recognizing Two-Horned Trapa



# The Damage



- punctures
- motors/commerce
- dissolved O<sub>2</sub>
- sedimentation
- recreational value
- property/aesthetic values
- threat to tidal waters, SAV



# Manual Removal of Trapa



photo courtesy of Fairfax County Parks



# Artificial Ponds & Waterfowl



*photo by msbraverman, iNaturalist*

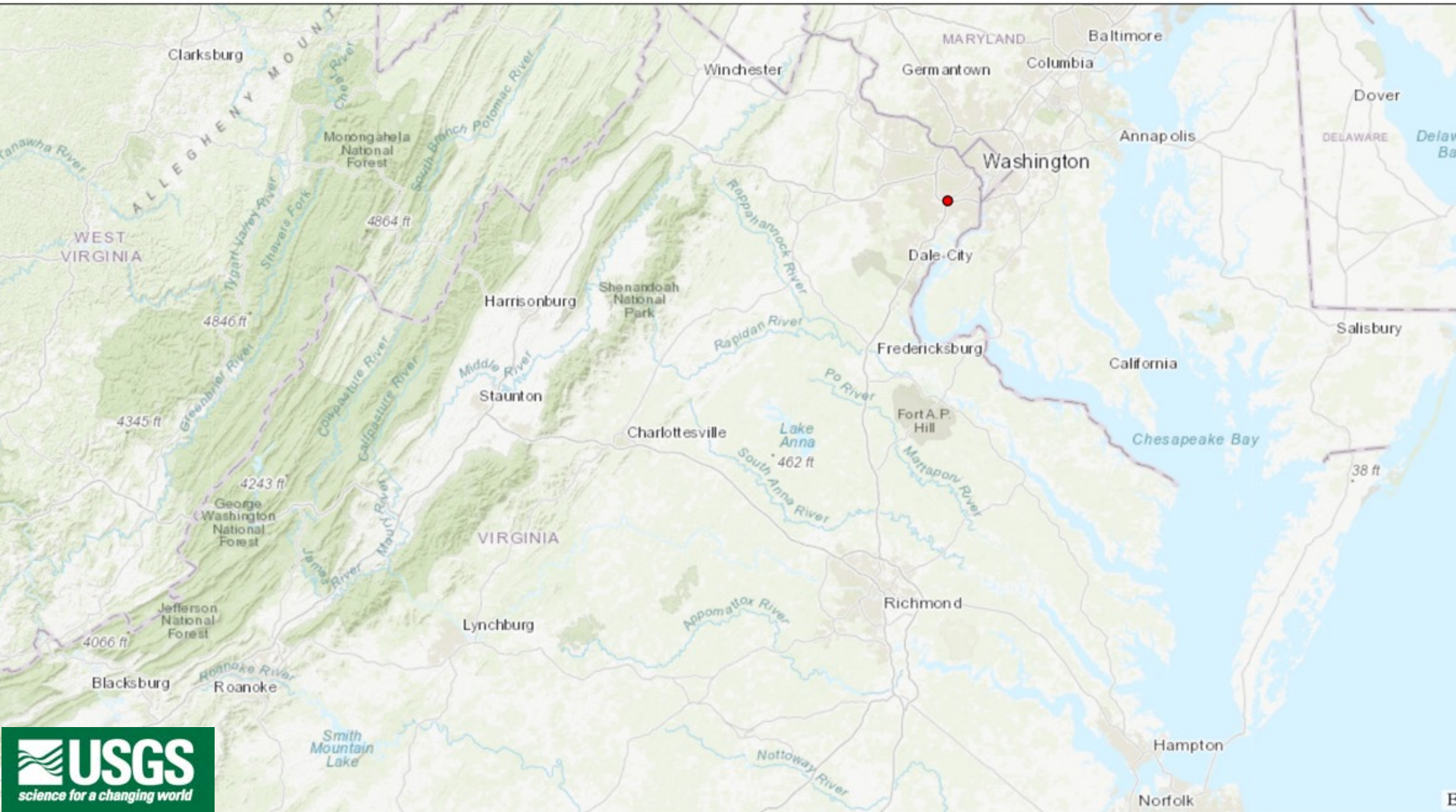
✓ Cumulative

✓ Skip years with no recorded sightings



2000

**Note: Time series reflects NAS data and may not accurately reflect actual species spread.**





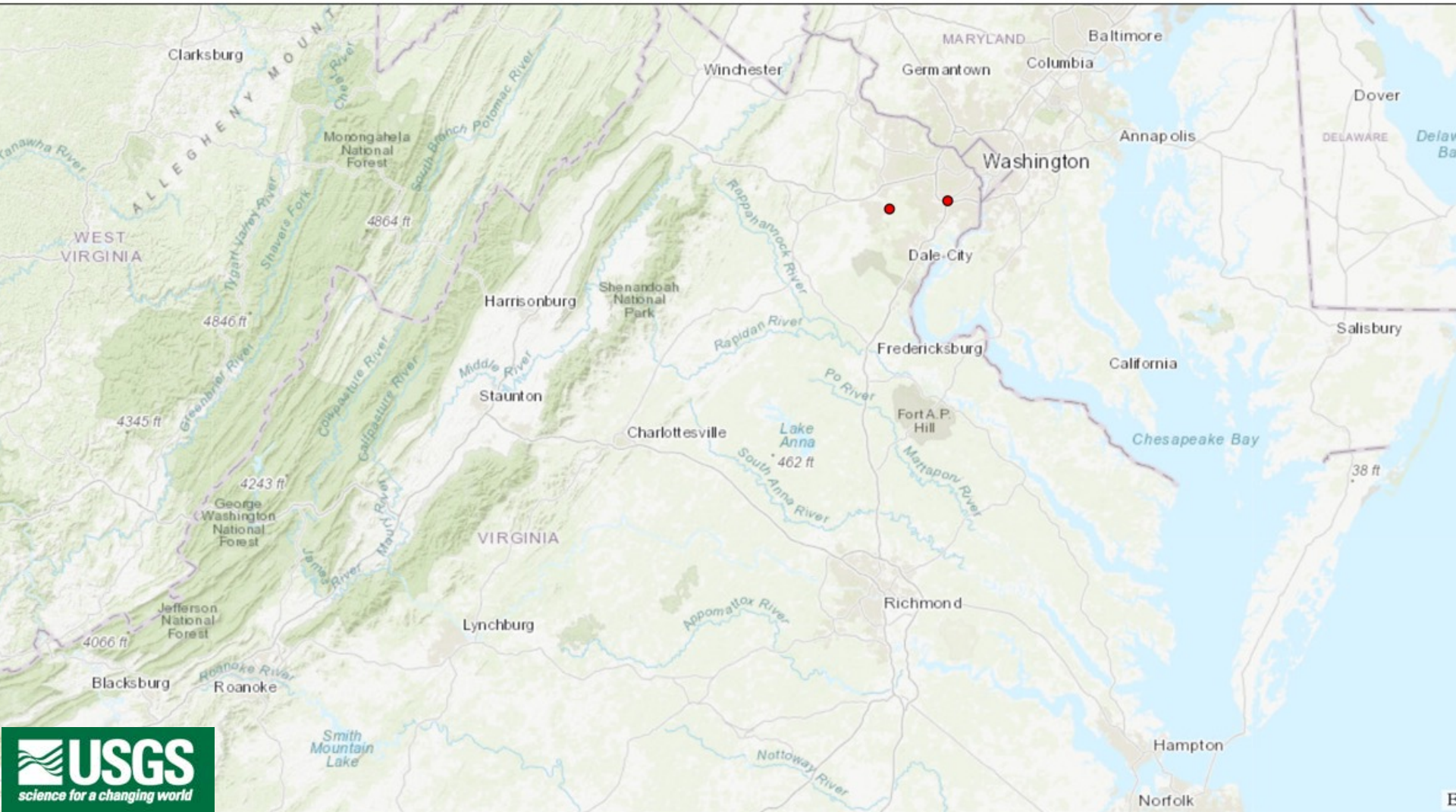
✓ Cumulative

✓ Skip years with no recorded sightings



2005

**Note: Time series reflects NAS data and may not accurately reflect actual species spread.**





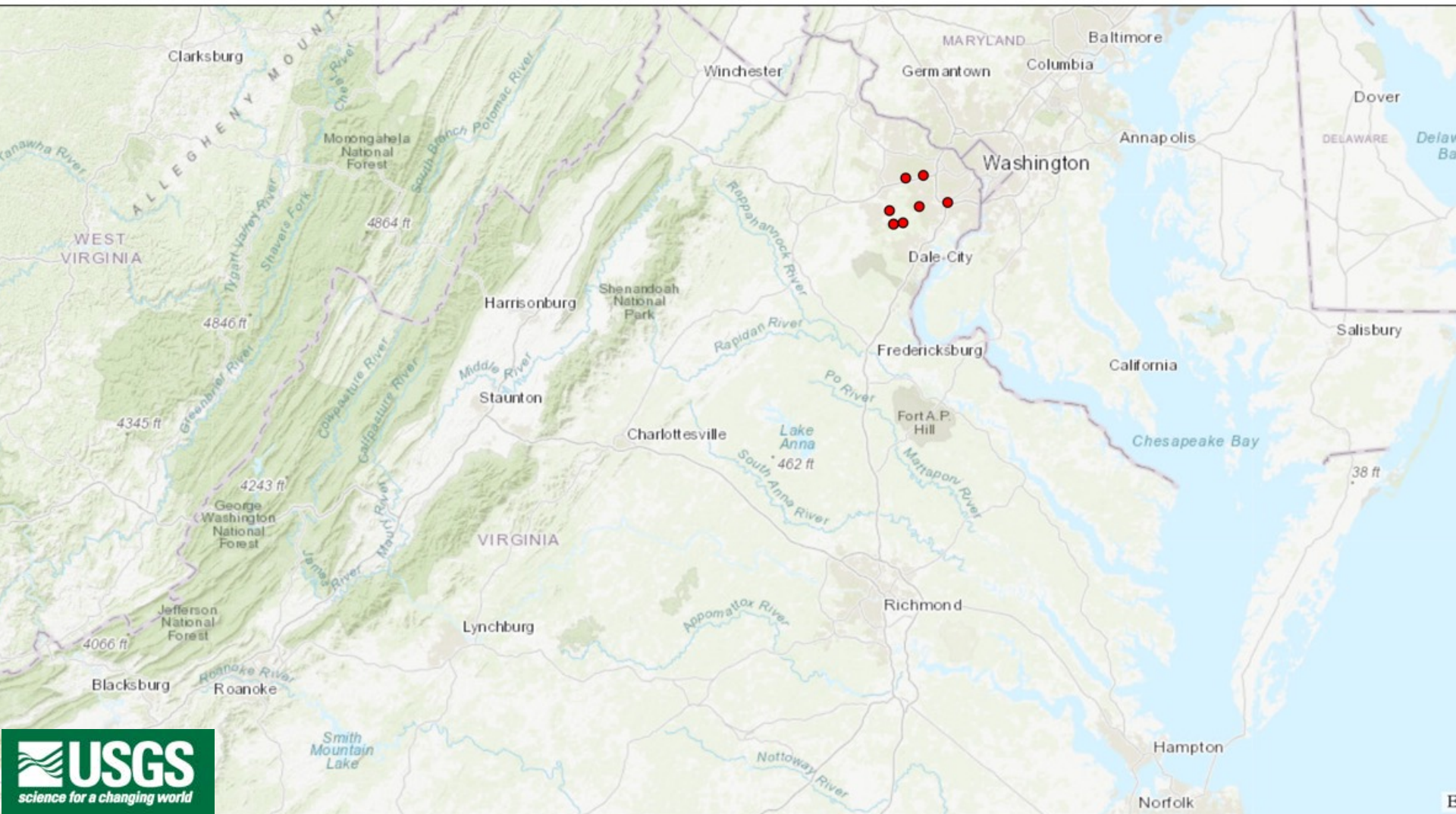
✓ Cumulative

✓ Skip years with no recorded sightings



2010

**Note: Time series reflects NAS data and may not accurately reflect actual species spread.**





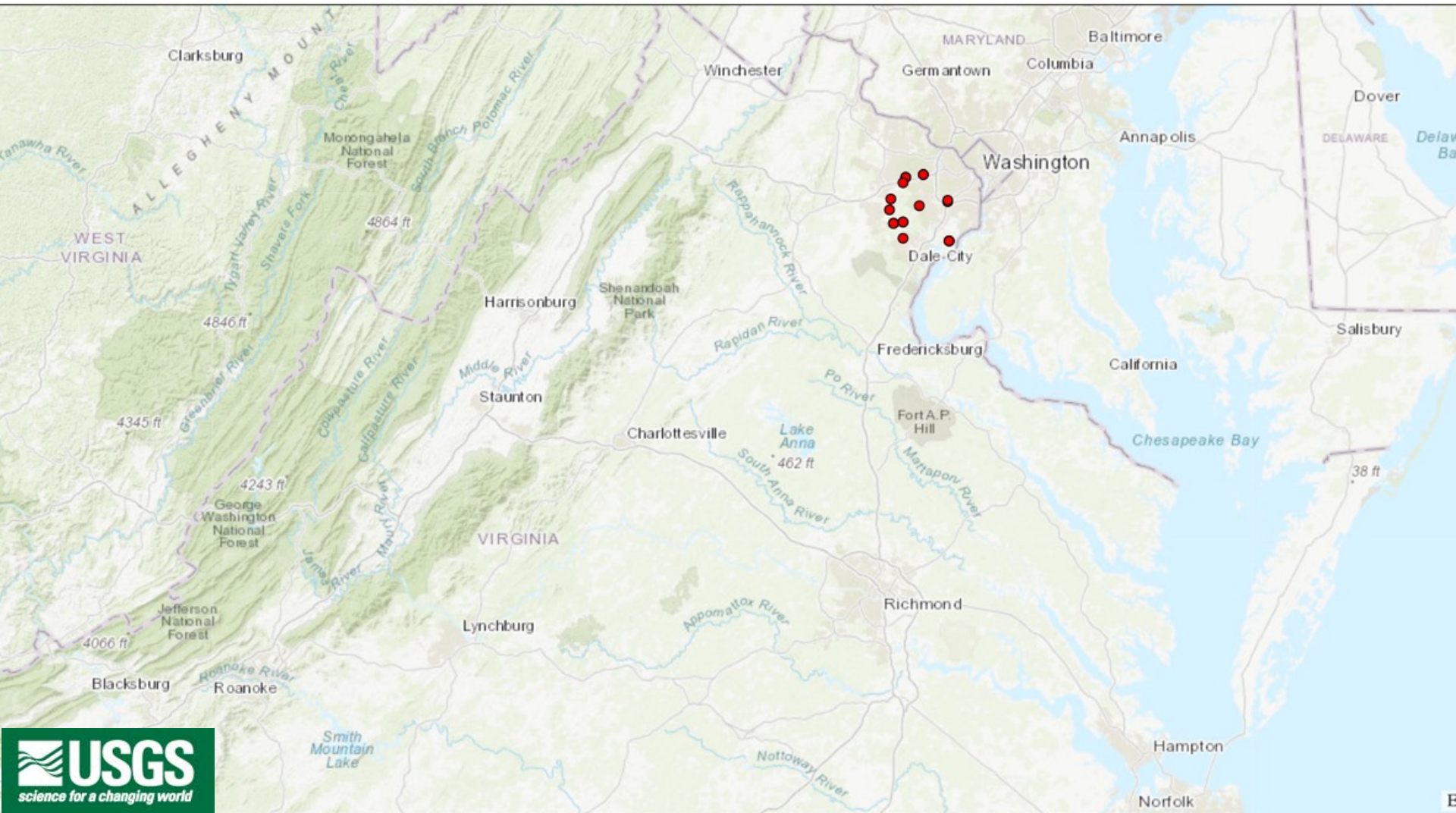
✓ Cumulative

✓ Skip years with no recorded sightings



2015

**Note: Time series reflects NAS data and may not accurately reflect actual species spread.**





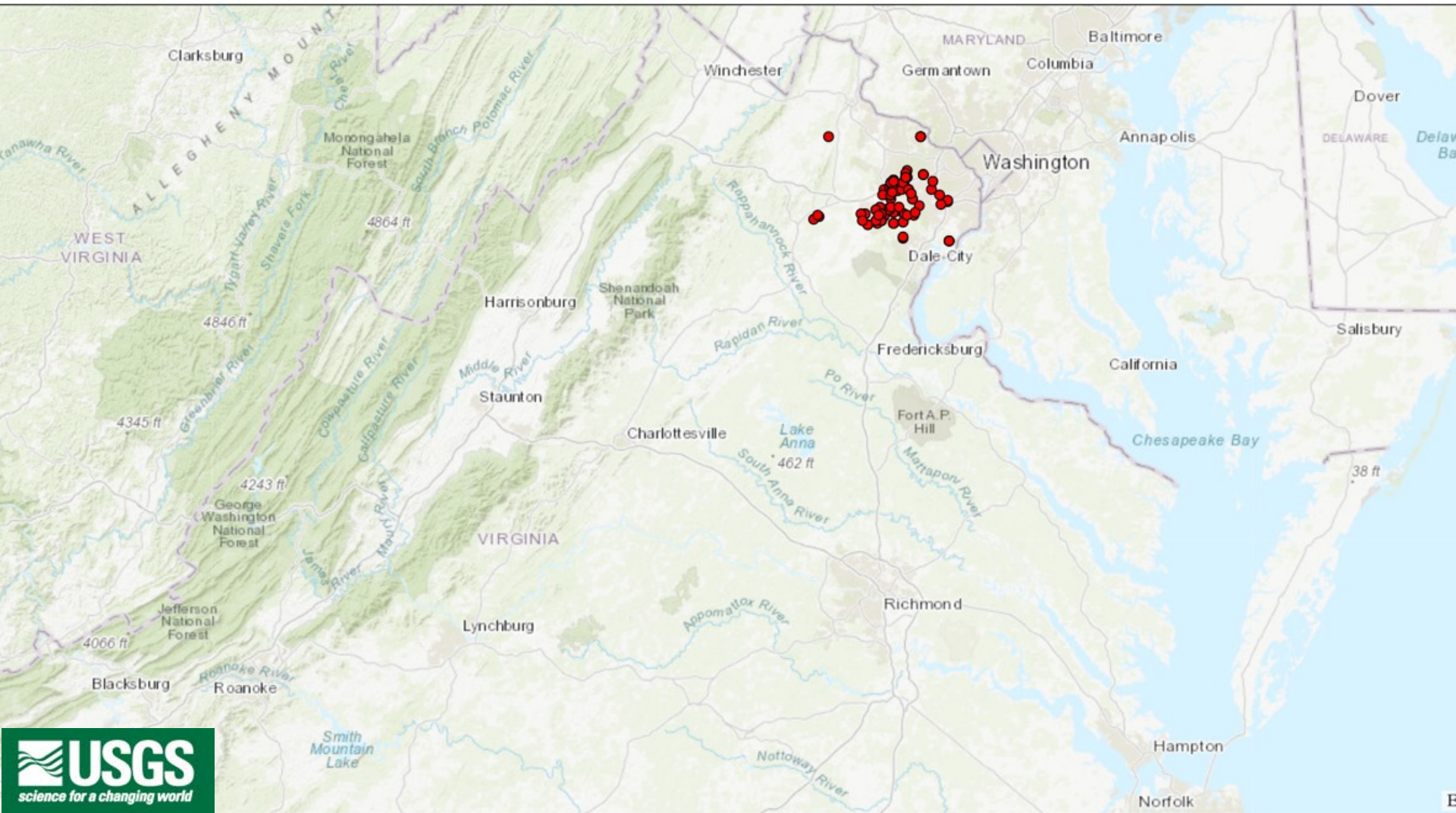
✓ Cumulative

✓ Skip years with no recorded sightings



2020

**Note: Time series reflects NAS data and may not accurately reflect actual species spread.**





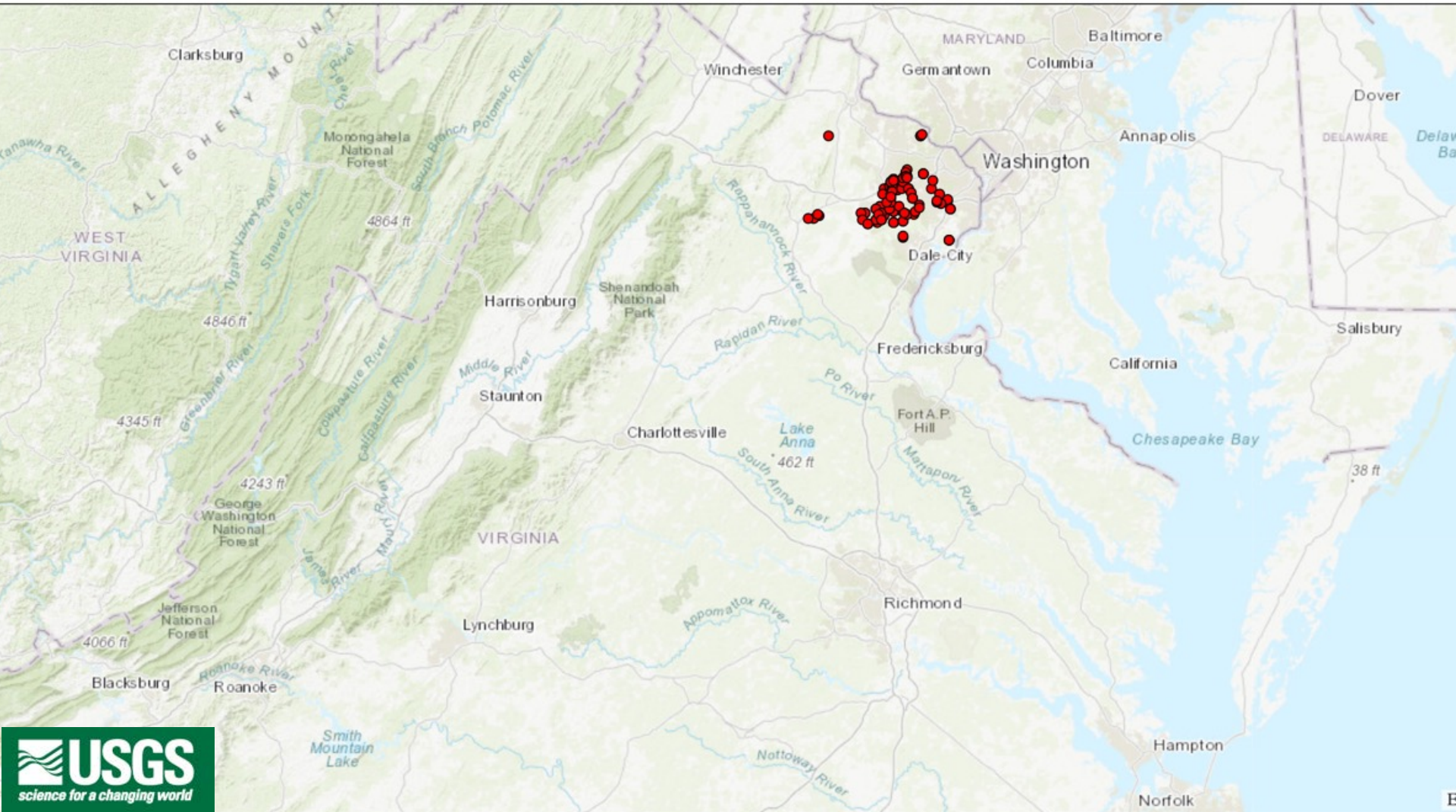
✓ Cumulative

✓ Skip years with no recorded sightings



2021

**Note: Time series reflects NAS data and may not accurately reflect actual species spread.**





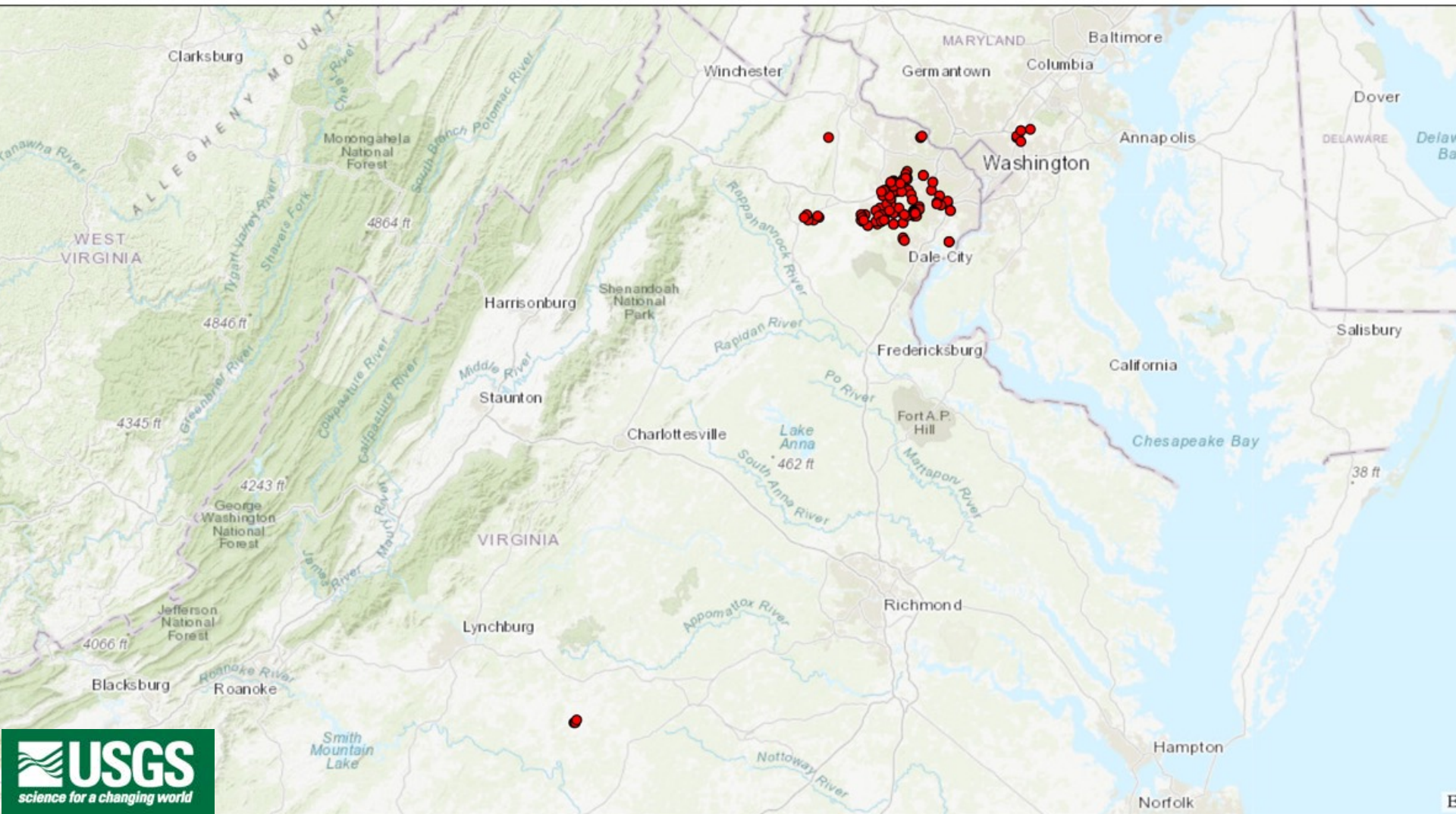
✓ Cumulative

✓ Skip years with no recorded sightings



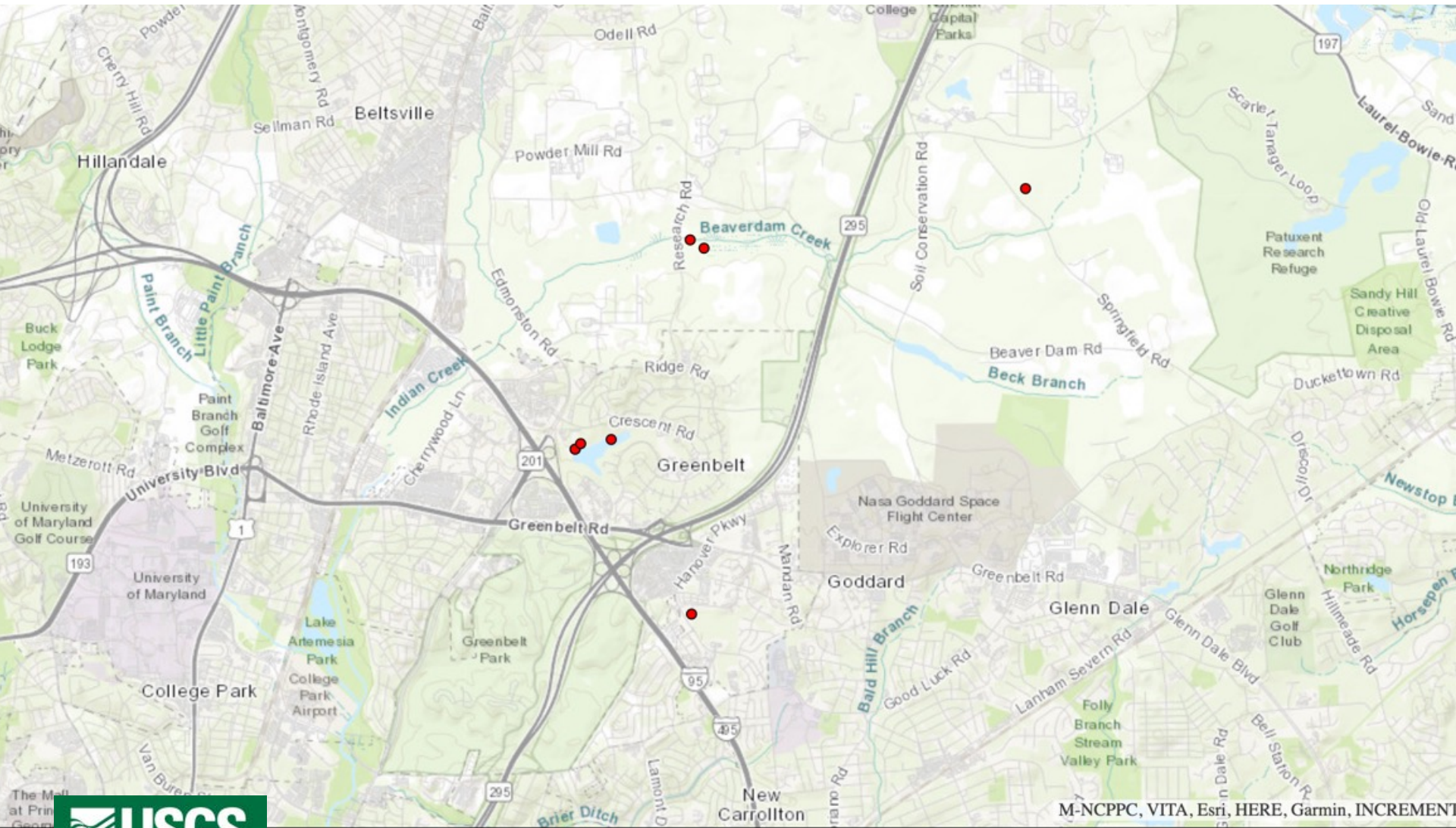
2022

**Note: Time series reflects NAS data and may not accurately reflect actual species spread.**





# Protecting the Anacostia Watershed





# Be an Invader Detective!

## How to Report

- Please make **negative** reports to the Invader Detectives listserv. To join the listserv, email Sara, put “listserv” in the subject line:  
[sara.tangren@dc.gov](mailto:sara.tangren@dc.gov)
- Please make **positive** reports to your preferred resource:
  - listserv
  - iNaturalist
  - EDDMapS
  - USGS NAS